

To BS 5163 Type B. Stem sealing exchangeable under pressure  
 Face to face dimension to ISO 5752 table 1 series 3  
 Flanges and drilling to GB/T 17241.6 / ISO 7005-2 (EN 1092-2:1997, DIN 2501)

**Use:**

For water, sewage and neutral liquids  
 to max. 70° C

**Test:**

Hydraulic test to GB/T 13927 / BS 5163:

Seat: 1.1 x PN

Body: 1.5 x PN

Operating torque test

**Optional extras:**

Stem cap  
 Gearbox with stem cap  
 Gearbox with handwheel  
 Gearbox with extension spindle  
 Electric actuator  
 AVK combi-flange (for DN 500-600)

**Materials:**

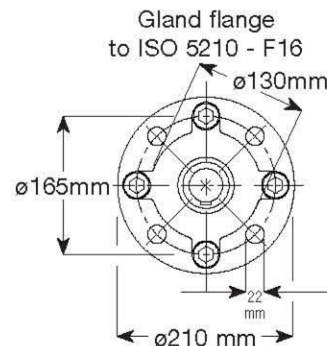
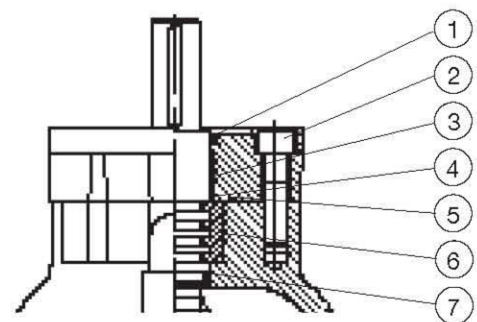
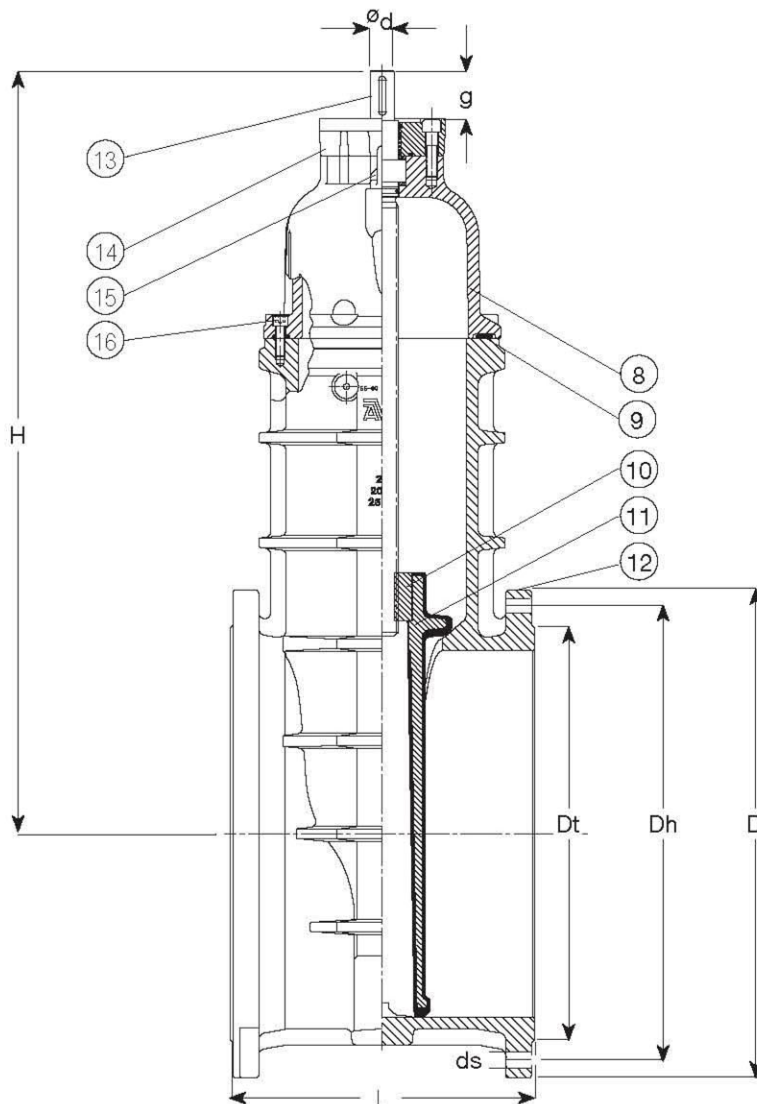
Body, bonnet and gland flange	Ductile iron, GGG-50, to DIN 1693 (BS 2789 grade 500 - 7)
Coating	Electrostatically applied epoxy - Internally and externally
Stem	Stainless steel, DIN x 20 Cr 13 / AISI 420
Stem sealing	NBR wiper ring
Bearing	Polyamid
Wedge	Ductile iron, GGG-50, core fully vulcanised with EPDM rubber, with integral wedge nut of dezincification resistant brass, CZ 132 to BS 2874
Thrust collar	Dezincification resistant brass, CZ 132 to BS 2874
Bonnet bolts	Stainless steel A2, sealed with hot melt
Bonnet gasket, stem/bonnet O-ring	EPDM rubber
Gland flange O-rings	EPDM rubber
Lifting eyes, gland flange bolts, stud bolts, nuts and washers	Stainless steel



To BS 5163 Type B. Stem sealing exchangeable under pressure  
Face to face dimension to ISO 5752 table 1 series 3  
Flanges and drilling to GB/T 17241.6 / ISO 7005-2 (EN 1092-2:1997, DIN 2501)

**Component list**

- |                        |                       |                  |
|------------------------|-----------------------|------------------|
| 1. Wiper ring          | 7. Stem/Bonnet O-ring | 13. Stem         |
| 2. Gland flange bolt   | 8. Bonnet             | 14. Gland flange |
| 3. Bearing             | 9. Bonnet gasket      | 15. Lifting eye  |
| 4. Stem seal O-ring    | 10. Wedge nut         | 16. Bonnet bolt  |
| 5. Gland flange O-ring | 11. Wedge             |                  |
| 6. Thrust collar       | 12. Body              |                  |



Ref. nos.	DN	L mm	H mm	Dt mm		D <sub>b</sub> mm		D <sub>h</sub>		ds mm		mm no.	Holes mm	$\varnothing_d$ mm	g kilos	Weight
				PN 10	PN 16	PN 10	PN 16	PN 10	PN 16	PN 10	PN 16					
55-450-780X6	450	432	1130	538	635	565	585	29,5	32,5	20	40	80	633			
55-500-780X6	500	457	1130	593	699	620	650	29,5	35,5	20	40	80	663			
55-600-780X6	600	508	1270	685	720	813	840	725	770	32,5	38,5	20	40	80	828	

X: 0 = PN 10  
1 = PN 16